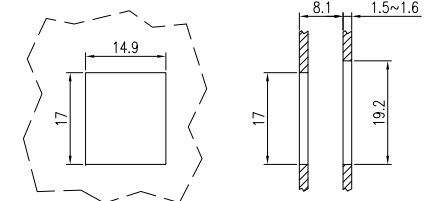
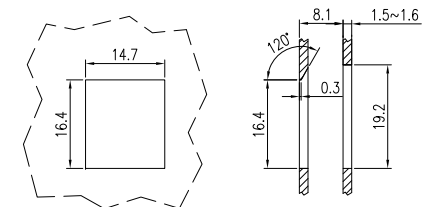


SUGGESTED CUTOUT: FLUSH-MOUNT APPLICATION

METAL



PLASTIC



P / N	COLOR
HCIFP-05	WHITE
HCIFP-05BK	BLACK

MATERIAL

Housing: High-impact Acrylonitrile Butadiene Styrene (ABS resin), UL 94 V-0 rated

HDMI:

Shell: Brass(C2680R-EH), t=0.5 mm (0.02 in), plated with 0.76 μm (30 μin) gold

Contacts: C5191R-H phosphorous bronze, t=0.25 mm (0.01 in), plated with 0.38 μm (15 μin)

thick hard gold at contact area, 2.54 μm (100 μin) thick tin at solder area, 1.27 μm (50 μin)

thick nickel underplate

Insulator: Polyamide 6T (Nylon 6T) + 30% glass filled (E430NK-T5), UL 94 V-0 rated, black color

PCB: FR4, t=1.6 mm (0.063 in), UL 94 V-0 rated

RoHS compliant

DRAWN BY Ethan Wu				
APPROVED BY Jerry Su				
DIMENSIONS ARE MM [IN]				
TOLERANCES:				
~20	~50	~150	150~	ANGLE
±0.2	±0.4	±0.5	±1.5	2°
3rd Angle Projection				

CC		
ADAPTERS & COUPLERS		
DWG. NO. HCIFP-05 & HCIFP-05BK		REV. 1
CUSTOMER PARTS NO.		
DATE 2012.02.01	SCALE X	SHEET 1/1