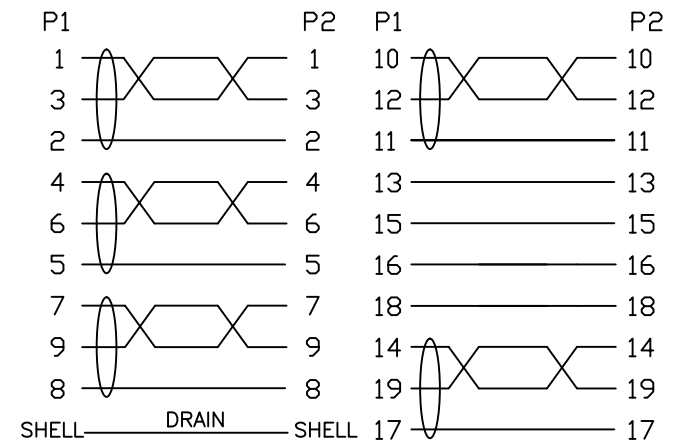


Item NO.	L/(MM)	T/(MM)
32-3760	500	15
32-3761	1000	20
32-3762	2000	40

Pin OUT



ELECTRONIC TEST:

- 1.OPEN/SHORT/INTERMITTENCE: 100%.
- 2.HI-POT: AC 150V 0.01S
- 3.INSULATION RESISTANCE:DC300V 0.01S 5MΩ(MIN)
- 4.CONDUCTIVE RESISTANCE:3 Ω (MAX)
- 5.Support:8K\*4K@30Hz 4:4:4  
Support:8K\*4K@60Hz DSC
- 6.Printing:ULTRA HIGH SPEED HDMI® CABLE

⑤	DUST COVER	COLOR:TRANSPARENT	2	PCS
④	MOLDED	45P BLACK PVC		G
③	MOLDED	LD-PE		G
②	CONNECTOR	HDMI A Male The Pin GOLD PLATED,RED INSULATION, GOLD PLATED SHELL.	2	PCS
①	CABLE	(1/0.254BC*1P+1/0.254BC+AL)*5+1/0.254BC*4C+A+D(1/0.254BC)+B(128/0.12ALM)+BLACK PVC OD:6.0±0.2MM	L	MM
NO.	MATERIAL	DESCRIPTION	QTY.	UNIT

Ltemref	Quantity	Title/Name,designation,material,dimension etc	Article No./Reference		
Designed by ACHY	Checked by HELEN	Approved by - date 31-03-2020	File name	Date 31-03-2020	Scale FREE
ANGLE:			HDMI2.1 cable A-A,30AWG,black		
UNIT:MM				Edition 1	Sheet 1/1