

1 2 3 4 5 6

A

B

C

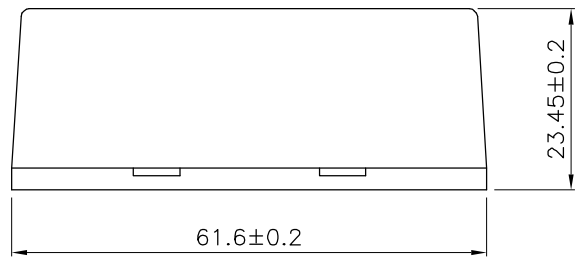
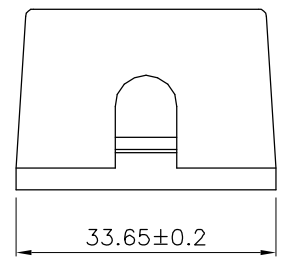
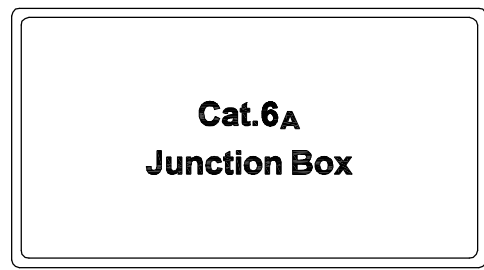
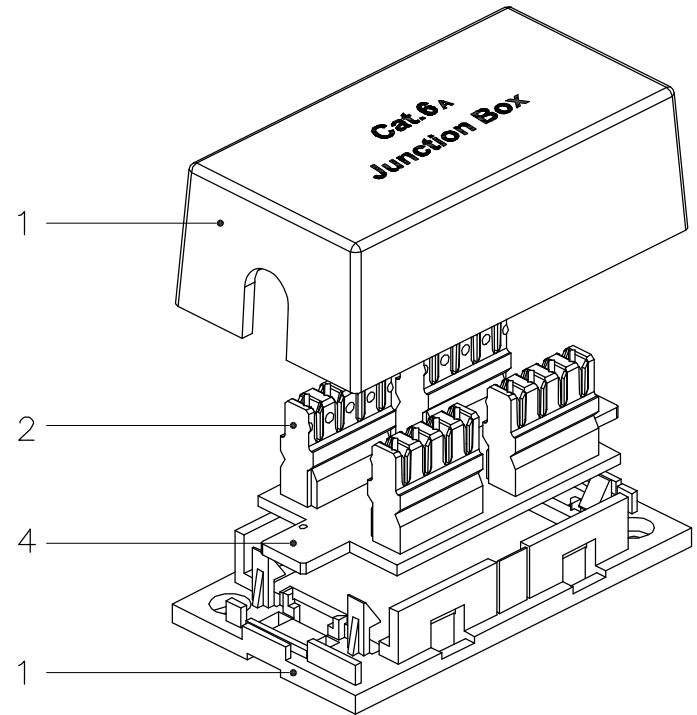
D

A

B

C

D



SCALE 1/1

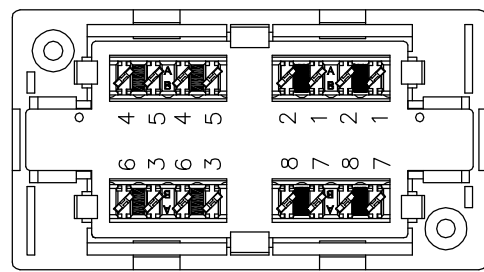
Specification:

Material :

- 1. Housing : ABS+PC, UL 94V-0.
- 2. IDC :
  - 2-1. Housing : PC, UL 94V-2.
  - 2-2. Terminal : Phosphor Bronze with Tin plated.
- 3. PCB : FR4, UL 94V-0.

Performance :

- a. T568A & T568B wiring Printing on IDC.
- b. Operating temperature : -10°C to 60°C. (ISO/IEC 11801, ANSI/TIA 568 C.2)
- c. Life(mating cycles) :
  - \* IDC : Suitable for 22-26 AWG stranded and solid wire, compatible with 110 punch down tool/ Krone punch down tool.
- d. The Cat.6A transmission performance is in compliance with the ANSI/TIA 568 C.2 standard.



GENERAL TOLERANCE OF DIMENSIONS X.XXX ±0.005 X.XX ±0.05 X.X ±0.1	DRAWING	01.FEB.2016	WESLEY	<h1>Velocity</h1>
	CHECK	01.FEB.2016	DAY	
	APPROVAL	01.FEB.2016	JAIMY	
	DATE		NAME	
SCALE	1/1 (A4)	UNIT	mm	DES.: Cat.6A Unshielded Box
		DRAWING NO. AAGBA0100053105 JE316-KDA-C6AUS-WH(S02)		
		DRAWING CLASSIFICATION	S SHEET 1 OF 1	

1 2 3 4 5 6 10cm